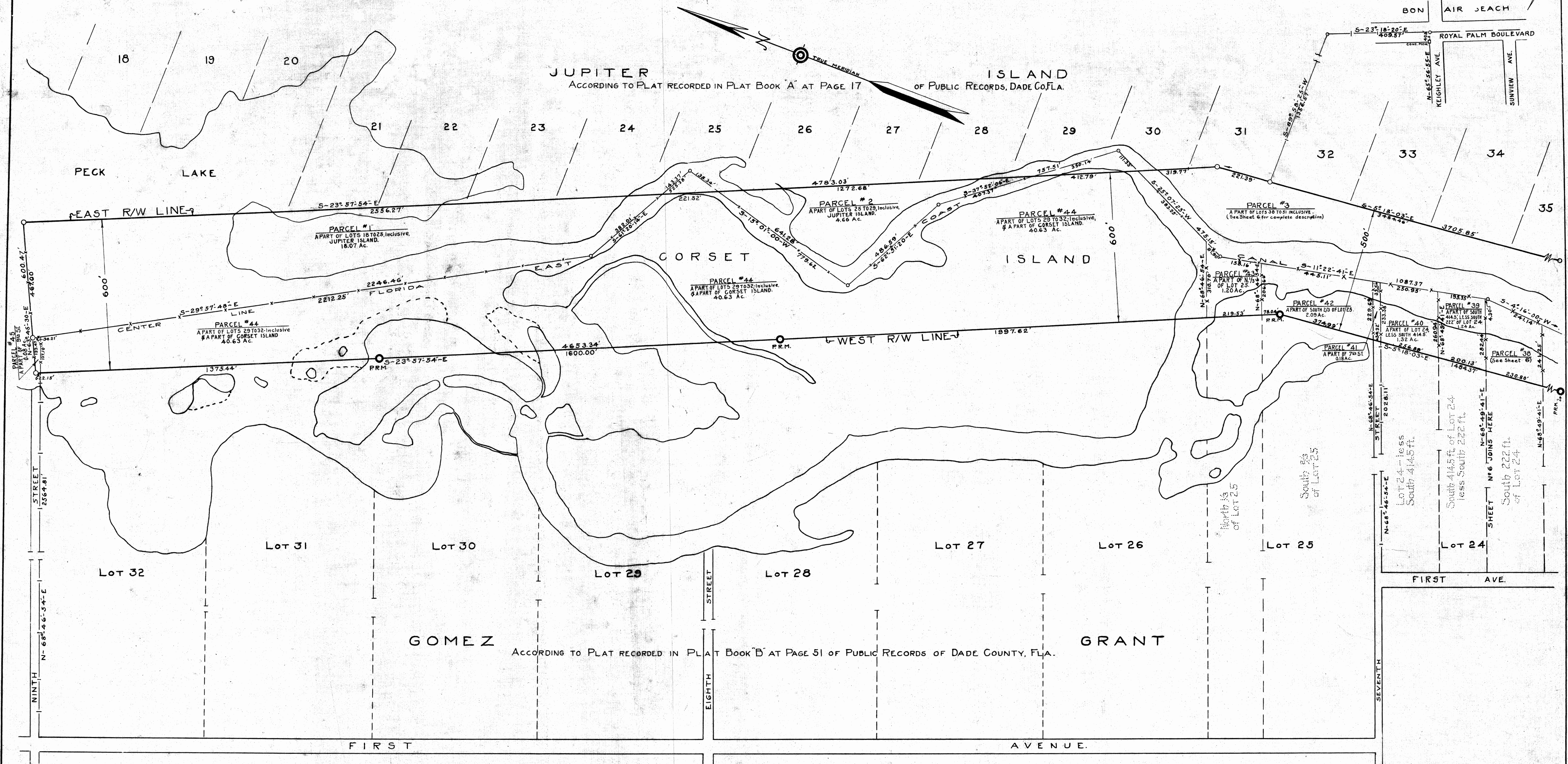


# JUPITER ISLAND AND GOMEZ GRANT

Page 5 of 9



TABULATION OF PARCELS						
ACREAGE BY PLANIMETER			EXCLUDED			
Parcel	Section	Subdivision	Gross Area	R/W now changed	Present Waterway	Copyright
1	JUPITER ISLAND	A part of Lots 18 to 23, inclusive, Jupiter Island	18.07	0.00	11.18	6.89
2	JUPITER ISLAND	A part of Lots 25 to 29, inclusive, Jupiter Island	4.66	0.00	1.62	3.04
39	GOMEZ GRANT	A part of S. 414.5 ft. less S. 222 ft. of Lot 24	1.24	0.00	0.58	0.66
40	GOMEZ GRANT	A part of Lot 24, less South 414.5 ft.	1.32	0.00	0.45	0.87
41	GOMEZ GRANT	A part of Seventh St.	0.18	0.00	0.05	0.13
42	GOMEZ GRANT	A part of South 2/3 of Lot 25	2.09	0.00	0.85	1.24
43	GOMEZ GRANT	A part of North 1/3 of Lot 25	1.20	0.00	0.46	0.74
44	GOMEZ GRANT	A part of Lots 29 to 32, incl. a part of Corset Isl.	40.63	0.00	9.18	31.45
45	GOMEZ GRANT	A part of Ninth St.	0.08	0.00	0.06	0.02

### LEGEND

- Township lines are shown thus
- Section lines
- 1/4 Section lines
- Parcel boundaries
- Existing Canal
- Right of Way lines are
- Points of Intersection
- P.R. Monuments
- P.R.M. Tie line
- Boundary of present Waterway
- Property lines outside of R.W.

INTRACOASTAL WATERWAY  
 FROM JACKSONVILLE, FLA. TO MIAMI, FLA.  
**FLORIDA EAST COAST CANAL**  
 SHOWING LOCATION AND RIGHT OF WAY THROUGH  
 MARTIN COUNTY, FLORIDA  
 GOMEZ GRANT  
 PREPARED FOR  
**FLORIDA INLAND NAVIGATION DISTRICT**  
 UNDER DIRECTION OF  
 GILBERT A. YOUNGBERG CHIEF ENGINEER  
 BY  
 CHARLTON & DAVIS CIVIL ENGINEERS

NOV. 1930  
 SHEET No. 5 of 9 SHEETS  
 SCALE 1"=200 Feet

TRACED BY G.O.M.  
 CHECKED BY G.O.M.  
 RECHECKED BY G.O.M.  
 APPROVED BY G.O.M.